

CORRECTED
 SEP 8 1938
 DEC 7 1938
 JAN 4 1939
 APR 5 1939
 APR 14 1939

FEB 14 1940
 MAR 5 1940
 MAY 1 1940
 MAY 24 1940
 OCT 3 1940

JAN 3 1941
 APR 2 1941
 APR 10 1941
 JUN 9 1941
 JUN 13 1941

SEP 17 1941
 OCT 1 1941
 OCT 13 1941
 OCT 17 1941
 JAN 2 1942

JAN 2 1942
 JAN 29 1942
 FEB 21 1942
 MAR 26 1943
 JUN 21 1943

NOV 3 1943
 FEB 14 1944
 FEB 24 1944
 APR 13 1944
 MAY 13 1944

OCT 23 1944
 DEC 16 1944
 NOV 13 1944
 MAR 5 1945
 APR 17 1945

JUL 12 1945
 AUG 23 1945
 AUG 27 1945
 SEP 2 1945
 APR 10 1946

JUN 17 1946
 FEB 4 1947
 MAY 9 1947
 OCT 1 1947

SEP 2 1947
 DEC 15 1971
 JUN 6 1974
 FEB 17 1974
 AUG 18 1974

JAN 5 1974
 JUN 2 1974
 JUL 3 1975
 OCT 1 1979

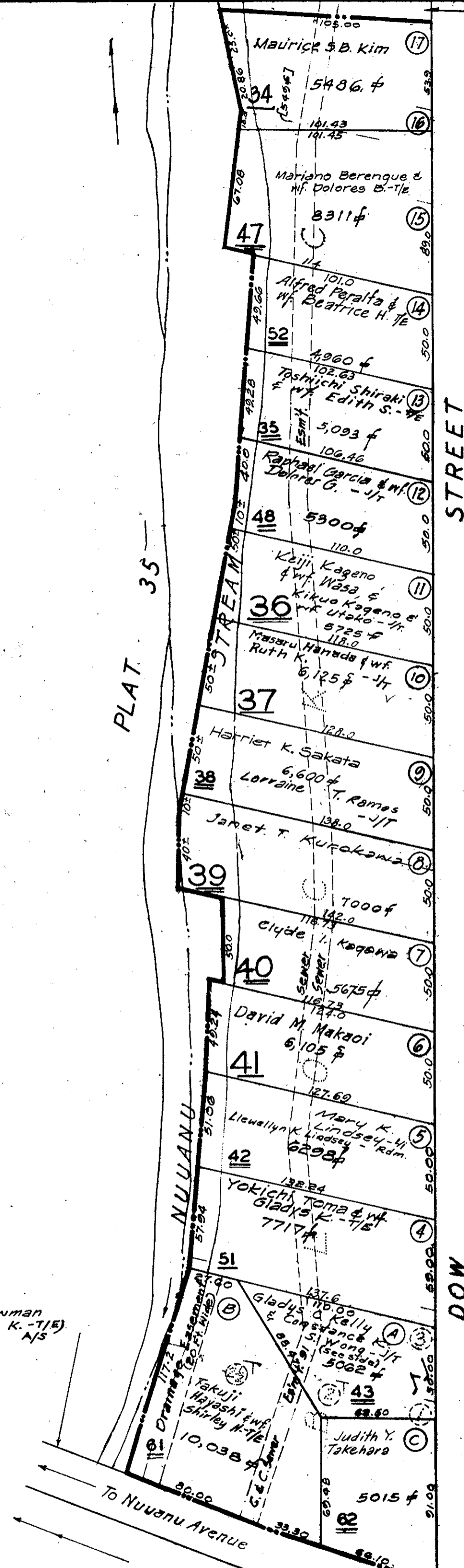
FEB 15 1979
 MAR 15 1979
 APR 15 1979
 MAY 15 1979
 JUN 15 1979
 JUL 15 1979
 AUG 15 1979
 SEP 15 1979
 OCT 15 1979
 NOV 15 1979
 DEC 15 1979

Parcel 43:
 Wright E. Bowman
 & W. Elizabeth K. N.S.

Source: Tax. Maps. Bureau.
 DWG No. 2233
 By: J. H. [unclear]

NUUANU, HONOLULU

PLAT 35

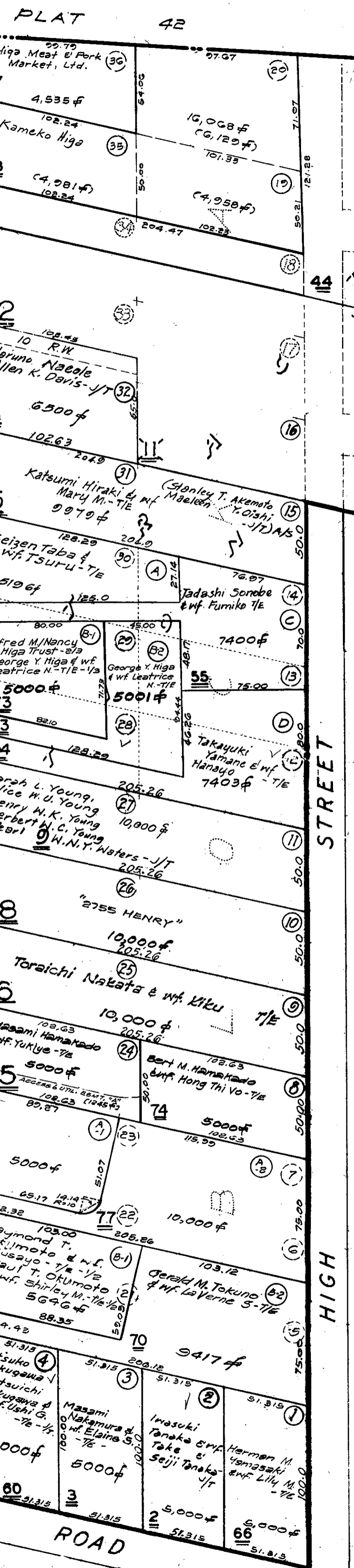


STREET

DOW STREET

STREET

HENRY STREET



LAIMI

PLAT 33

ROAD

PLAT 37

True North
 1" = 50'

Dropped Parcel: 1, 11

FIRST DISTRICT		
ZONE	SEC	PLAT
2	2	36
CONTAINING		PARCELS
Scale: 1 in = 50 ft		

ADVANCE SHEET
 SUBJECT TO CHANGE