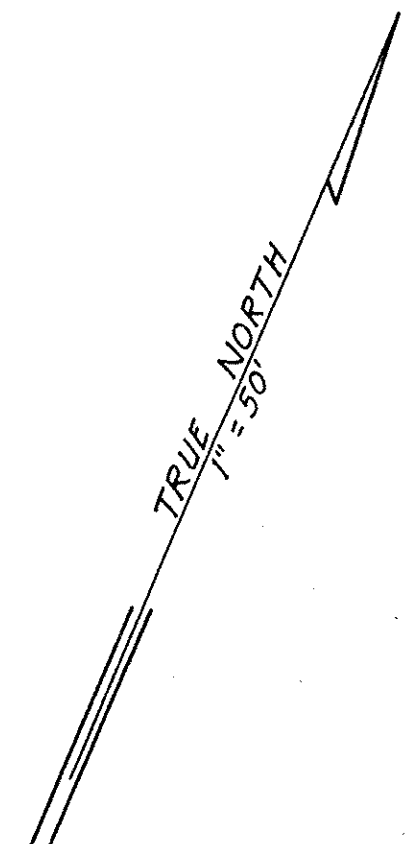


CORRECTED
MAY 25 1983
APR 27 1983
MAY 13 1983
JUL 27 1983
AUG 13 1983
OCT 1 1983
NOV 23 1983

Wahiawa, Oahu.

CYPRESS AVE.

NOTE: Parcels 33, owned by
Seiyei Miyasato & Mildred F. Nahine-JIT



PLAT 02

OHIA ST.

KAM HIGHWAY

1 (Dept. of Land Transportation
Facilities Division)

ADVANCE SHEET
SUBJECT TO CHANGE

FIRST DIVISION		
ZONE	SEC.	PLAT
7	3	04
CONTAINING PARCELS		
SCALE: 1 in. = 50 ft.		