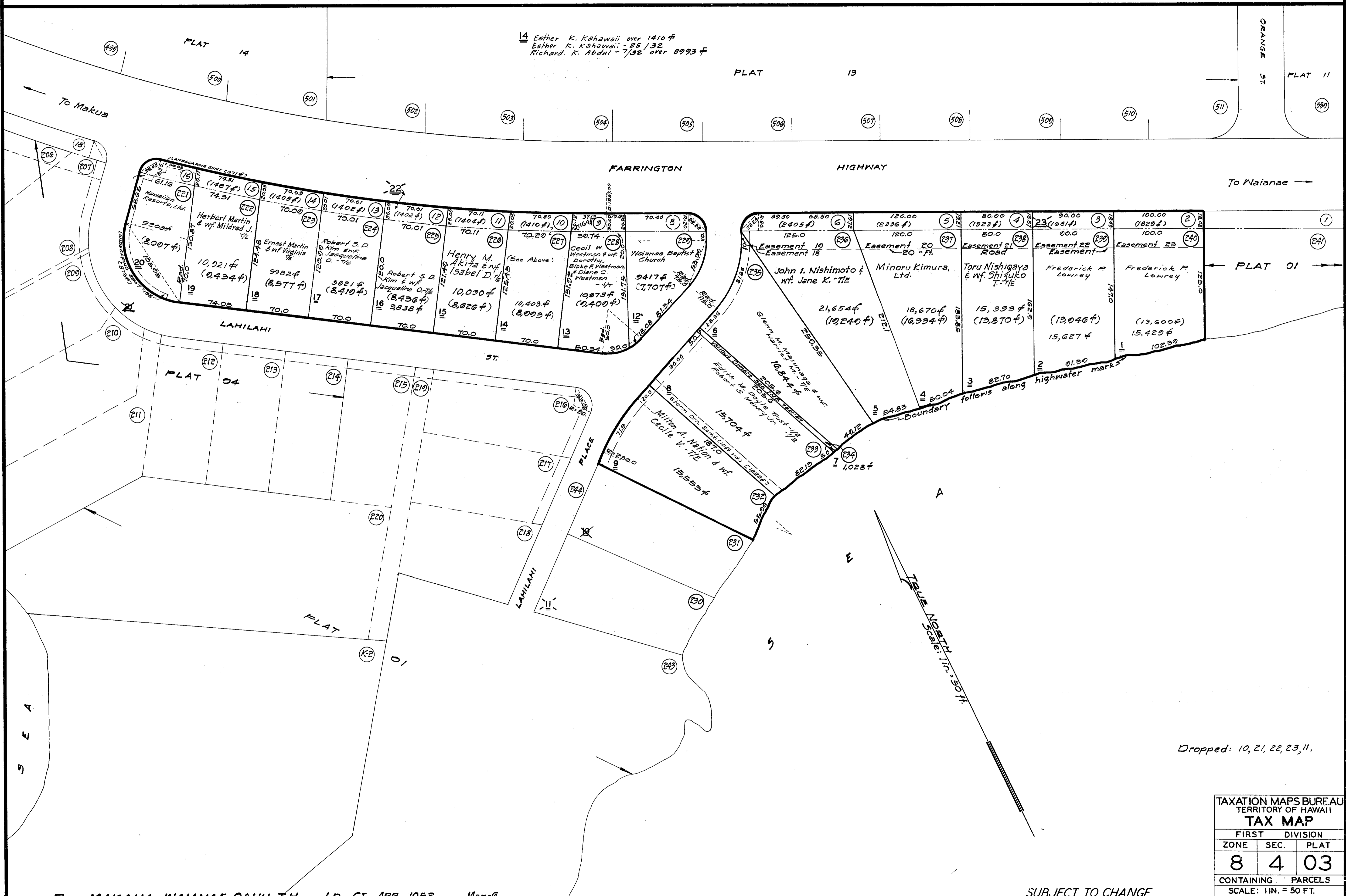


OCT 16 1947
 APR 23 1968
 AUG 9 1968
 OCT 11 1968
 NOV 15 1972
 NOV 23 1974
 DEC 3 1974
 FEB 2 1979
 FEB 10 1981
 SEP 30 1981

Dwg. No.: 3688
 Source: Map-6 Ld. Ct. App. 1052
 By: H.N. & R.T. Date: August 1947



TAXATION MAPS BUREAU		
TERRITORY OF HAWAII		
TAX MAP		
FIRST	DIVISION	
ZONE	SEC.	PLAT
8	4	03
CONTAINING		PARCELS
SCALE: 1 IN. = 50 FT.		