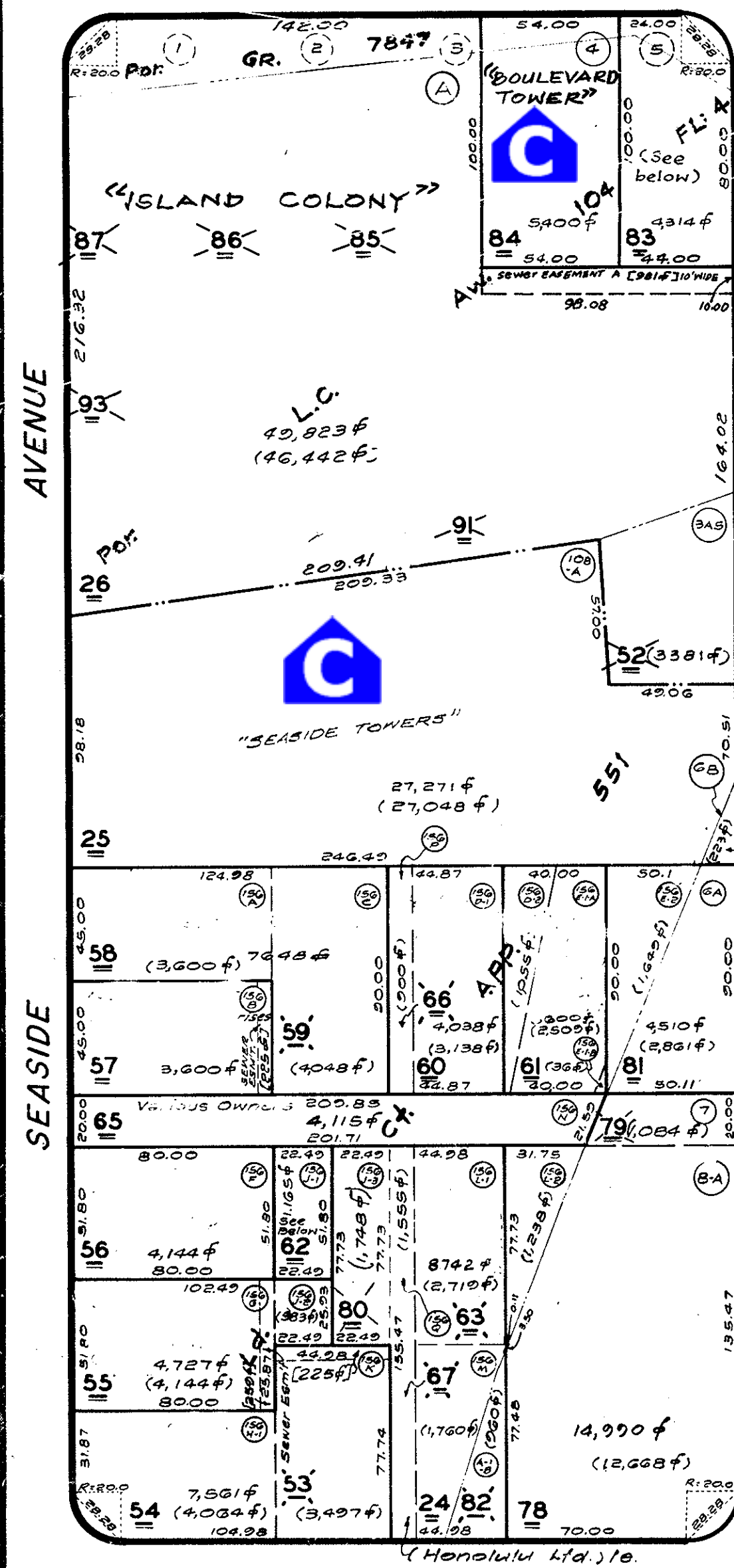


ALA

SECTION 7

WAI

SEASIDE AVENUE



NOHONANI STREET

NOHONANI STREET

KUHIO AVENUE

NAHUA STREET

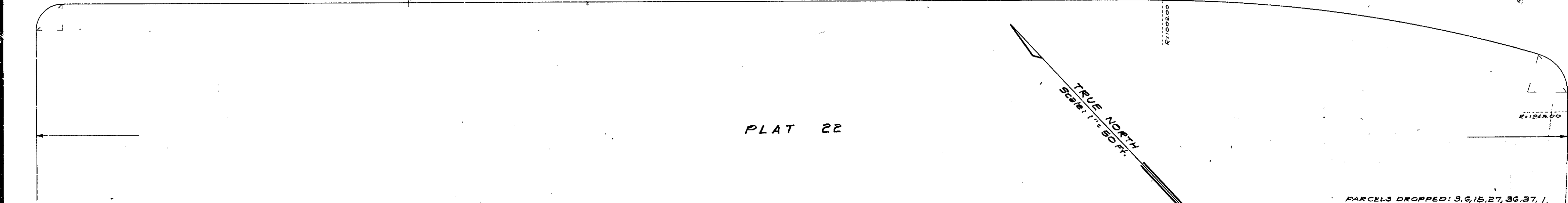
WAI AVENUE

WALINA STREET

BOULEVARD

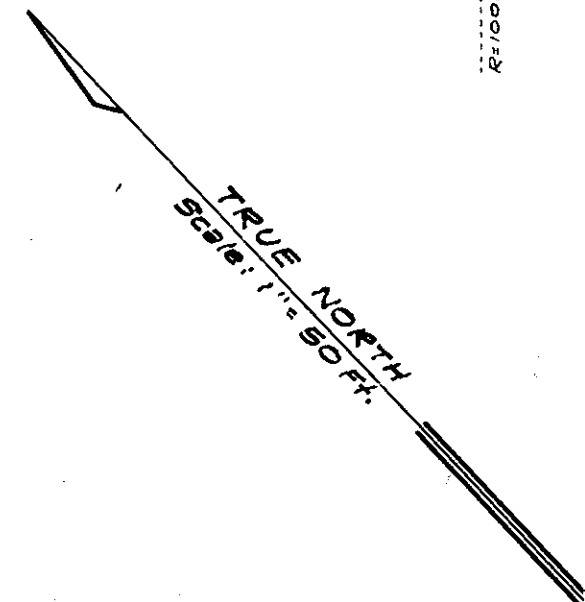
KANEKAPOLEI STREET

KAILANI AVENUE



PLAT 22

PLAT 23



DWG. NO. 748 Revised July 9, 1950
 SOURCE: Tax Maps, Bureau of Taxation, State of Hawaii
 BY: T.A.J.A./R.L.H. DATE: August 30, 1952

PARCELS DROPPED: 3, 6, 15, 27, 36, 37, 1, 38, 43, 51, 53, 54, 55, 66, 74, 77, 35, 82, 46, 89, 90, 92, 96, 97, 106, 89, 80, 44, 35, 71, 48, 118, 31, 32, 33, 73, 32, 41, 42, 64, 112, 52, 53, 56, 57, 31, 33, 30,

FOR REAL PROPERTY TAXATION PURPOSES
 SUBJECT TO CHANGE

DEPARTMENT OF TAXATION		
TAXATION MAPS BUREAU		
STATE OF HAWAII		
TAX MAP		
FIRST	TAXATION DIVISION	
2	6	21
SCALE: 1 IN. = 50 FT.		

WAIKIKI, HONOLULU, OAHU