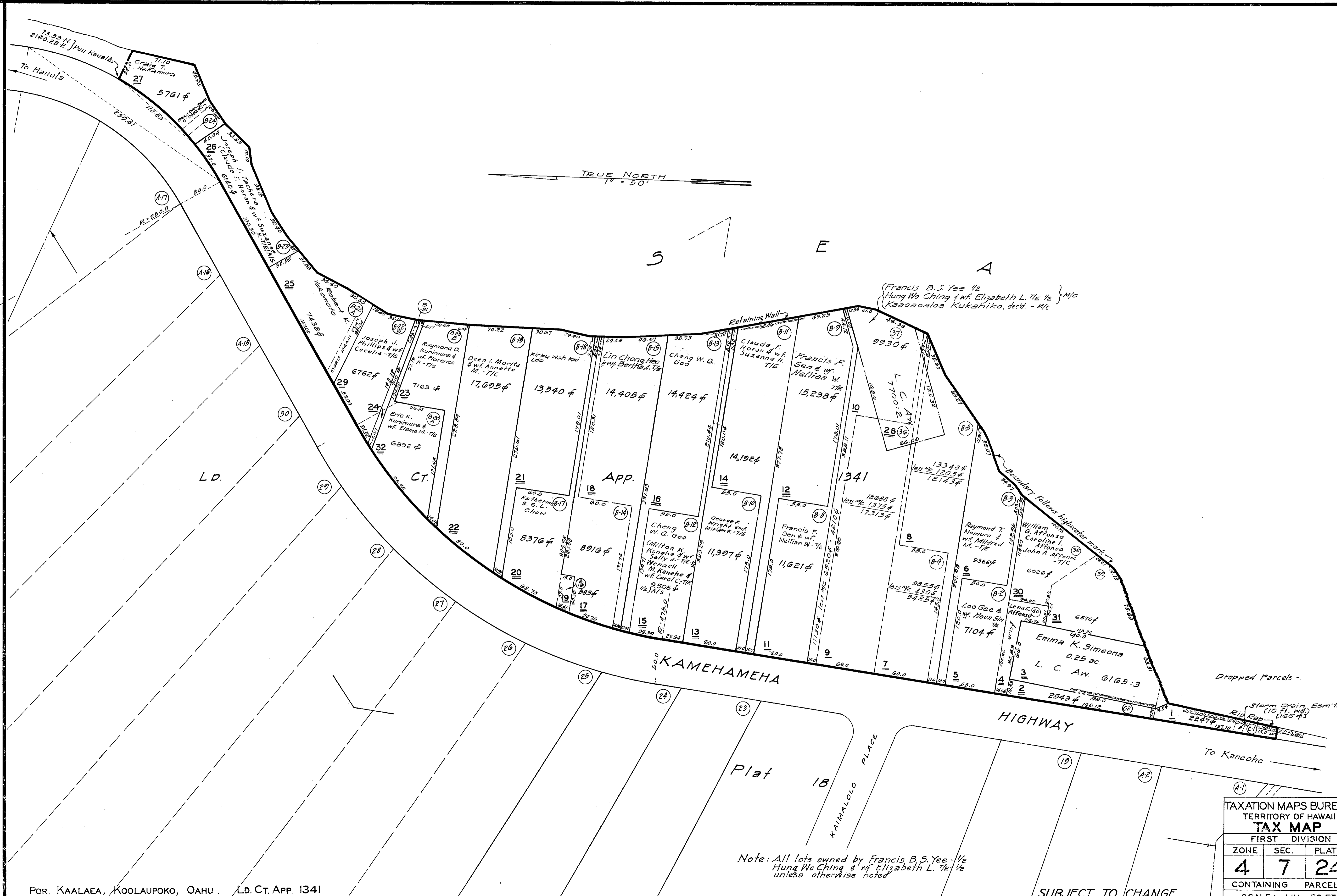


SEP 7 1943
 NOV 4 1945
 NOV 19 1945
 MAY 2 1946
 MAY 1 1947
 MAY 27 1950
 JUN 1 1950
 OCT 1 1950
 MAY 7 1950
 MAY 1 1951
 MAY 1 1952
 MAY 1 1953
 MAY 1 1954
 MAY 1 1955
 MAY 1 1956
 MAY 1 1957
 MAY 1 1958
 MAY 1 1959
 MAY 1 1960
 MAY 1 1961
 MAY 1 1962
 MAY 1 1963
 MAY 1 1964
 MAY 1 1965
 MAY 1 1966
 MAY 1 1967
 MAY 1 1968
 MAY 1 1969
 MAY 1 1970
 MAY 1 1971
 MAY 1 1972
 MAY 1 1973
 MAY 1 1974
 MAY 1 1975
 MAY 1 1976
 MAY 1 1977
 MAY 1 1978

Dwg No.: 3585
 Source: T.M.B. & Ld. Ct. App. 1341
 By: H.N. - D.Y. SEPT. 1943



Note: All lots owned by Francis B. S. Yee - 1/2 Hung Wo Ching & w/f Elizabeth L. Tse - 1/2 unless otherwise noted.

TAXATION MAPS BUREAU		
TERRITORY OF HAWAII		
TAX MAP		
FIRST DIVISION		
ZONE	SEC.	PLAT
4	7	24
CONTAINING PARCELS		
SCALE: 1 IN. = 50 FT.		